



Forrest County Storm Water Module

*Created By
Forest County Planning Department*

Purpose

- ▶ Reason for the Storm Water Program
- ▶ Overview of Forrest County Stormwater Ordinance
- ▶ Knowledge of Best Management Practices (BMPs)
- ▶ Pictures of Dos and Don'ts
- ▶ Construction Sites
- ▶ Good House Keeping
- ▶ Illicit Discharges

Storm Water Phase II Program

Regulated Small MS4 Designation

Automatic Nationwide Designation:

All small MS4s Located Within
“Urbanized Areas” (UAs)



What is an MS4?

A municipal separate storm sewer system (MS4) is a conveyance or system of conveyances... owned by a state, county, city, town, or other public entity that discharges to waters of the U.S. and is designated or used for collecting or conveying storm water.

Storm Water Phase II Program

"Urbanized Area" Definition

A central place (or places) -- *core* -- and the adjacent densely settled surrounding area -- *fringe* -- that together have a minimum population of 50,000 and a minimum average density of 1,000/square mile.

FORREST COUNTY STORMWATER ORDINANCE

The information that follows is for informational purposes only. For more detailed information, refer to the actual Forrest County Stormwater Ordinance titled, *"Forrest County Ordinance for Stormwater Runoff, Illicit Discharges and Illegal Connections"* Copies can be obtained from the Planning Office (641 Main St.) or online at www.forrestcountymn.us

Forrest County Ordinance

- ▶ Adopted: January 6, 2005
- ▶ Purpose:
 - A. To protect the environment, health, safety, property and general welfare of the citizens of Forrest County, MS through the regulation of stormwater runoff and illicit discharges into the county storm drainage or any separate storm sewer system, to the maximum extent practicable as required by federal and state law.
 - B. The ordinance is not intended to modify or repeal any other ordinance, rule, regulation or other provision of law. The requirements of the ordinance are in addition to the requirements of any other ordinance, rule, regulation or other provision of law and where any provision of the ordinance imposes restrictions different from those imposed by any other ordinance, rule, regulations or other provision of law. Whichever provision is more restrictive or imposes higher protective standards for human health or the environment shall control.

Forrest County Ordinance

► Objectives:

1. To regulate or restrict the introduction of pollutants that may potentially enter the county drainage system.
2. To prohibit illegal connections and discharges to any separate storm sewer system
3. To identify, define, and regulate erosion, sediment and detention controls related to stormwater runoff
4. To prevent discharges that may occur as a result of spills, inappropriate dumping or disposal and/or improper connections to the county drainage system, whether residential, industrial, commercial or institutional establishments.
5. To provide Forrest County with the authority to deal with stormwater runoff non-conformance and illicit discharges and to establish enforcement actions for those persons or entities found to be in noncompliance or that refuse to allow access to their facilities
6. To establish legal authority to carry out all inspection, surveillance, monitoring and enforcement procedures necessary to ensure compliance with the ordinance.

Forrest County Ordinance

► Permitting:

Permit applications shall be filled out and copy filed at the Forrest County Planning Department (641 Main St.). Stormwater permits and stormwater pollution prevention plans (SWPP) are required on developments as follows:

0-.9 acre of land disturbed: no permit or SWPP required, only notification of the Planning Department.

1-5 acres of land disturbed: permit required from Forrest County Planning Department. A notice of intent (CNOI) and SWPPP must be submitted to the Planning Department. (Contact Planning Department for aforementioned forms)

Above 5 acres of land disturbed: permit required from MDEQ. SWPPP and CNOI must also be submitted to MDEQ with a copy to the Forrest County Planning Department.

Forrest County Ordinance

► Violations:

It is unlawful for any person to violate the provisions of the ordinance. A person doing so will face enforcement actions. Whenever the Forrest County Board of Supervisors finds a violation has occurred, a written notice of violation will be given to the violator. The notice will contain the following:

1. Name and address of the alleged violator
2. The address when available or a description of the building, structure or land upon which the violation is occurring or has occurred
3. A statement specifying the nature of the violation
4. A description of the remedial measures necessary to restore compliance with the ordinance and time schedule for the completion of the remedial action
5. A statement of the penalty or penalties that shall or may be assessed against the person to whom the notice of violation is directed
6. A statement that the determination of violation may be appealed to the Forrest County Board of Supervisors by filing a written notice of appeal within thirty (30) days of service of notice of violation.

Forrest County Ordinance

► Violations, continued:

Notices may require:

1. The performance of monitoring, analyses and reporting
2. The elimination of illicit connections or discharges
3. That violating discharges, practices, or operations shall cease and desist.
4. The abatement or remediation of stormwater pollution or contamination hazards and the restoration or any affected property
5. Payment of a fine or costs to cover administrative remediation, and/or abatement costs
6. The implementation of source control, pollution prevention practices or treatment of BMPs

Forrest County Ordinance

► Penalties:

A. Civil

In the event the alleged violator fails to take the remedial measures set forth in the notice of violation or otherwise fails to cure the violations described therein within ten days, or such greater period as the local permitting authority shall deem appropriate, after the permitting authority has taken one or more of the actions described above, the local permitting authority may seek any legal or equitable remedy available under the law. The authorized enforcement agency may recover all attorney's fees, court costs, and other expenses associated with enforcement of this ordinance, including sampling and monitoring expenses. Additionally, failure to comply with MDEQ Stormwater Regulations may result in actions being taken by state and federal agencies in accordance with the Mississippi air and water pollution control law (Section 49-17-1 ET SEQ.) and the federal Clean Water Act.

Forrest County Ordinance

► Penalties:

B. Criminal

Violations of this ordinance shall be deemed a misdemeanor. The local permitting authority may issue a citation to the alleged violator requiring such person to appear before the appropriate court to answer charges for such violation. Upon conviction, such person shall be punished by a fine not to exceed \$1,000 per offense or imprisonment in the County jail not to exceed 6 months, or both. Each violation and each day upon which any violation shall continue, will constitute a separate offense.

C. Criminal Prosecution

Any person that has violated or continues to violate this ordinance shall be guilty of a misdemeanor and subject to criminal prosecution to the fullest extent of the law.

Forrest County Ordinance

► Penalties:

D. Injunction

If a person has violated or continues to violate the provisions of this ordinance, the authorized enforcement agency may petition for a preliminary or permanent injunction restraining the person from activities which would create further violations or compelling the person to perform abatement or remediation of the violation.

E. Alternative Action

In addition to any other remedy, the authorized enforcement agency may impose upon a violator alternative compensatory action, such as storm drain stenciling, attendance at compliance workshops, creek cleanup, etc.

Storm Water Phase II Program

Automatically Designated Municipalities

| | | |
|----------------|-----------------|----------------|
| Bay St. Louis | Harrison County | Pascagoula |
| Biloxi | Hattiesburg | Pass Christian |
| Brandon | Hinds County | Pearl |
| Clinton | Horn Lake | Petal |
| D'Iberville | Jackson County | Rankin County |
| DeSoto | Lamar County | Richland |
| Flowood | Long Beach | Ridgeland |
| Forrest County | Madison | Southaven |
| Gautier | Madison County | Waveland |
| Gulfport | Moss Point | |
| Hancock County | Ocean Springs | |

Storm Water Phase II Program

Regulated Small MS4 Designation

- ▶ Designation criteria **MUST** be developed and applied to small MS4s outside UAs serving a population $\geq 10,000$ and a population density $\geq 1,000$ sq.mi.

Run-off Pre and Post Development



Run-off Pre and Post Development



Run-off Pre and Post Development



Run-off Pre and Post Development



Construction Sites



Erosion and Sediment Control

Uncontrolled Sediment



Don't

Erosion and Sediment Control



Don't

Don't

Erosion and Sediment Control

Silt Fencing



Erosion and Sediment Control

Silt Fencing



Do



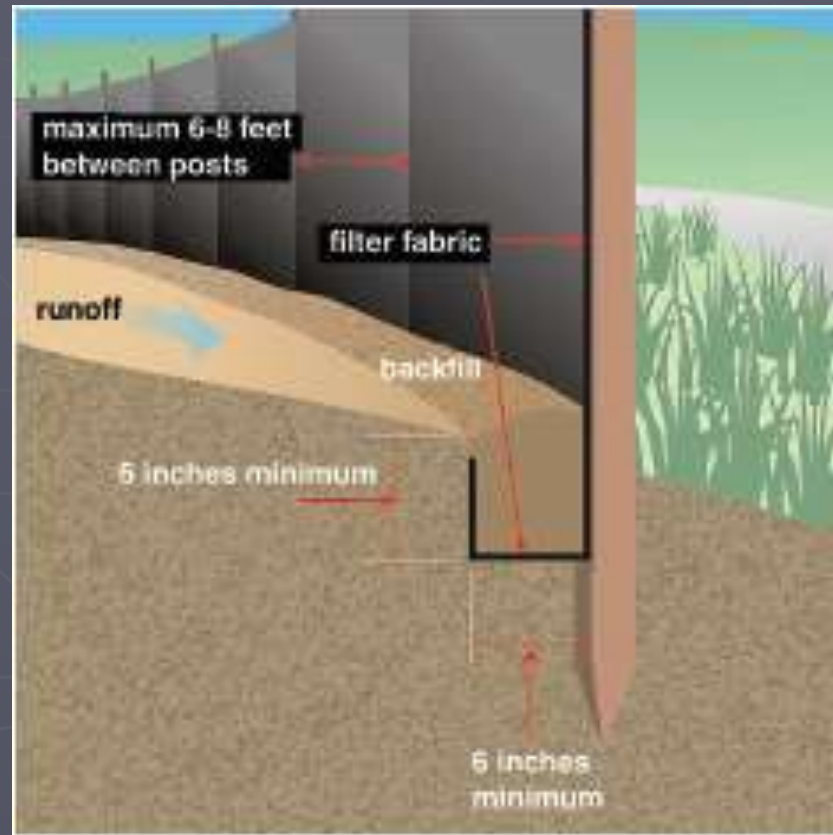
Don't



Do

Erosion and Sediment Control

Silt Fencing

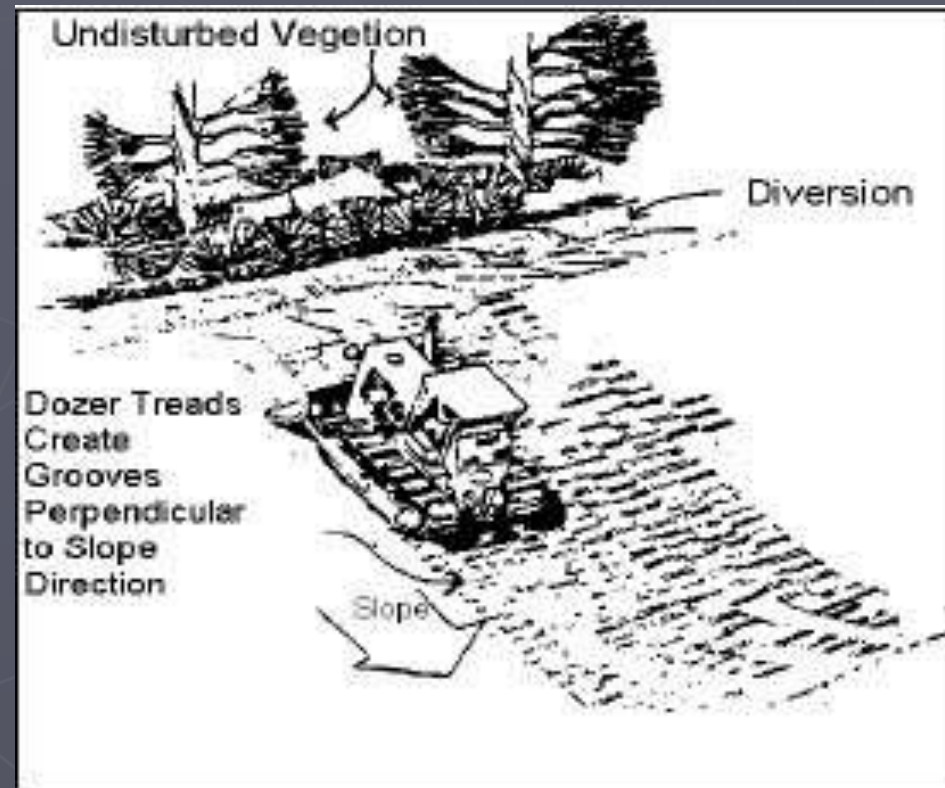


Do

Erosion and Sediment Control Hill Stabilization



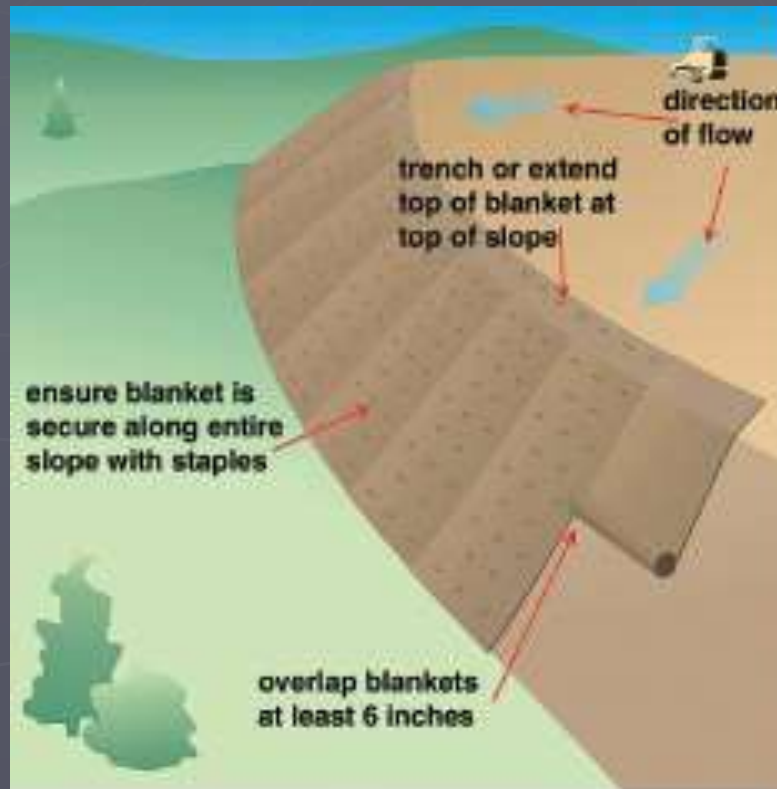
Don't



Do

Erosion and Sediment Control

Hill Stabilization



Do

Erosion and Sediment Control Retention Pond



Do

Erosion and Sediment Control Construction Entrance



Don't



Do

Erosion and Sediment Control Construction Entrance



Don't

Erosion and Sediment Control Sedimentation



Don't



Don't



Don't



Don't



Don't

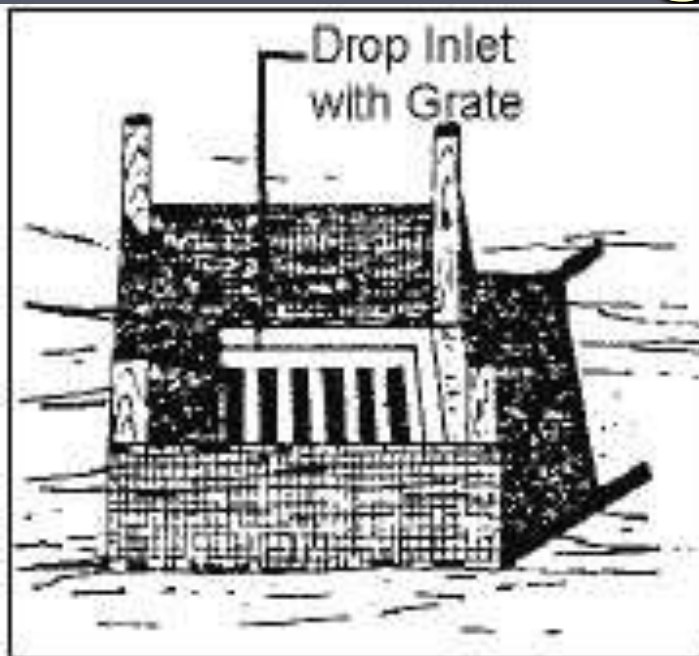
Erosion and Sediment Control

Sedimentation



Don't

Erosion and Sediment Control Storm Drains



Do



Don't

Erosion and Sediment Control Storm Drains



Erosion and Sediment Control

Sedimentation



Don't



Don't

Erosion and Sediment Control Sedimentation



Don't



Don't



Don't

Good House Keeping



Oil/Chemical Spills



Don't



Do

Oil/Chemical Spills



Don't

Chemical Storage



Don't

Illicit Discharges



Illegal Dumps



Don't



Don't

Sewer Connections



Don't



Don't

Forrest County Illicit Discharges and Storm Water Contacts

► JeVaughn Osgood

601-583-7507

josgood@co.forrest.ms.us

► Corey Proctor

601-584-6162

cproctor@co.forrest.ms.us

Emergency Spills

Emergency Management / HazMat

► 601-544-5911



Local/State Storm Water Resources

City of Hattiesburg

www.hattiesburgms.com

City of Petal

www.cityofpetal.com

Forrest County

www.forrestcountymiss.us

Lamar County

www.lamarcountymiss.com

Mississippi Dept. of
Environmental Quality

www.mdeq.state.ms.us