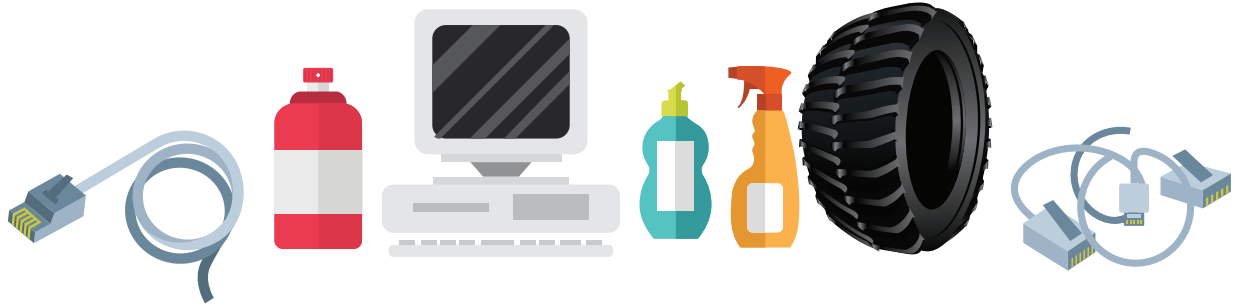




THE UNIVERSITY OF SOUTHERN MISSISSIPPI



# RIGHT WAY TO THROW AWAY DAY



## SATURDAY, APRIL 17 | 8 AM - 2 PM

**Bobby L. Chain Airport at 29 Academy Drive, Hattiesburg or  
Lamar County Multi-Purpose Center at 99 Central Industrial Row, Purvis**

### ITEMS ACCEPTED:

AEROSOLS, ALL-PURPOSE CLEANERS, AMMONIA, ANTI-FREEZE, APPLIANCES, AUTOMOBILE CLEANER, BARBECUE LIGHTER FLUID, BATTERIES, BRAKE FLUID, CHLORINE BLEACH, DETERGENTS, DISINFECTANTS, DRAIN OPENER, FURNITURE POLISH, HERBICIDES, INSECTICIDES, MOTHBALLS, MOTOR OILS, OIL FILTERS, OVEN CLEANERS, PAINT, PAINT THINNER, PESTICIDES, PHOTOGRAPHIC DEVELOPMENT CHEMICALS, POOL CHEMICALS, RODENT POISON, RUBBER CEMENT, RUG AND UPHOLSTERY CLEANER, SILVER POLISH, TIRES, TRANSMISSION FLUID, TURPENTINE, VARNISH, WATER SEALER, WOOD FINISH, COMPUTERS, LAPTOPS, KEYBOARDS AND MONITORS, WASHERS AND DRYERS, FLUORESCENT BULBS, TVS, REFRIGERATORS AND FREEZERS, ETC.

### NOT ACCEPTED:

AMMUNITION, EXPLOSIVES, MEDICAL WASTE, SYRINGES, RADIOACTIVE MATERIALS, PCB'S



### SHREDDING SERVICES AVAILABLE AT BOBBY L. CHAIN AIRPORT SITE

PARTICIPANTS CAN BRING SENSITIVE DOCUMENTS TO BE SHREDDED. THIS EVENT IS A FIRST-COME, FIRST-SERVED SERVICE UNTIL TRUCK IS FULL.



### COVID-19 SAFETY PROTOCOLS

DUE TO SAFETY PROTOCOLS, ALL PARTICIPANTS MUST REMAIN INSIDE THE VEHICLE AT ALL TIMES. MATERIALS INTENDED FOR DISPOSAL SHOULD BE PLACED IN THE TRUNK OF THE CAR (NOT THE BACK SEAT) OR ON THE BED OF A TRUCK/TRAILER. ANY ITEMS THAT ARE NOT MEANT FOR DISPOSAL SHOULD BE REMOVED FROM THESE AREAS SO THAT THERE IS NO CHANCE OF DISPOSING ITEMS OF VALUE.

