



FORREST COUNTY, MISSISSIPPI

Summary of Development Process

IMPORTANT PHONE NUMBERS

Forrest County Board of Supervisors

601-545-6000

Forrest County Emergency Management District

601-544-5911

Forrest County Tax Assessor

601-545-6130

Forrest County Chancery Clerk

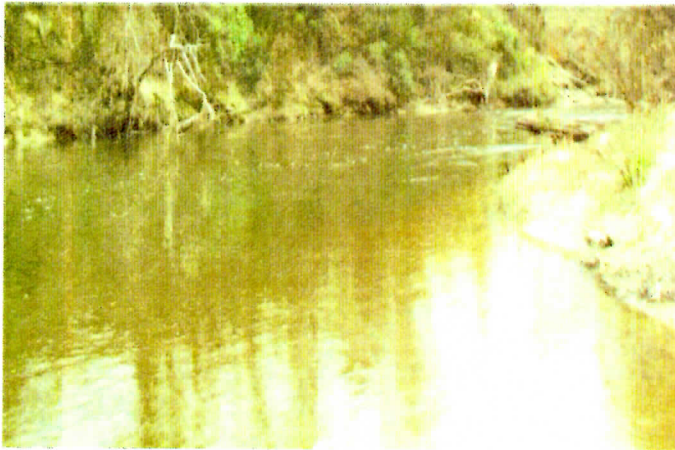
601-545-6013

Forrest County Tax Collector

601-582-8228

Forrest County Health Department

601-583-0291



FLOODPLAIN

The Planning Department issues flood permits and certifications for developments in the unincorporated areas of Forrest County. There is no charge for these permits. If developments are located within the floodplain; elevation certificates must be provided prior to, during and after construction. The aforementioned certificates must be completed by a licensed engineer or surveyor. For manufactured homes, tax registration is needed through the Forrest County Tax Assessor's Office.

All developments require an address which is issued by the Forrest County Emergency Management District. Any questions related to compliance on sewer systems and septic tanks should be directed to the Environmental Division of the Forrest County Health Department.

STORMWATER

For developments that disturb more than 1 acre and less than 5 acres, property owners are responsible to obtain a local Stormwater Permit and submit a Stormwater Pollution and Prevention Plan (SWPPP). For developments greater than 5 acres, property owners must acquire a permit from the Mississippi Department of Environmental Quality.

SUBDIVISION

The first step in the subdivision process is an initial meeting with the Planning Department to discuss development plans. All subdivisions shall be surveyed and divided in a manner that each and every lot or sites of land have no more than four units per square acre. If more than four units per acre, the developer must have Board approval, through the submittal of a preliminary layout. All roads must meet guidelines as outlined in subdivision ordinance.

The Developer(s) guarantees the improvements for a period of one (1) year after the date of the acceptance of the completed work by the Board of Supervisors. Approved final plats are recorded by filing the subdivision with the Chancery Clerk's Office. Filing fees are \$10.00 per subdivision, plus \$1.00 per lot.

FOR MORE INFORMATION

Forrest County Planning Department

P O Box 1310

Hattiesburg, MS 39403-1310

601-584-6162 or 601-583-7507

Fax # 601-583-3575